

STARHOTELS®  
PREMIUM

Metropole  
ROMA

# Metropole

ROMA



## *Comfort without compromise*

With its eclectic style, an evocative blend of comfort and class, the Starhotels Metropole shows Rome at its multifaceted best. Located in the city centre, near the Roma Termini railway station and the Teatro dell'Opera, its 236 newly renovated rooms and suites are an oasis of peace and relaxation away from the bustle of the city. The top-floor suites provide a breathtaking view of St Peter's dome and the city skyline.

# Metropole

ROMA



## Location

- Convenient location near the Termini railway station
- Stands close to Rome Opera House and Piazza della Repubblica
- Only 10 minutes walk from Colosseum, Fori Imperiali and Trevi Fountain

## Distances

**Railway station:** Km 0,3

**Highway:** Km 25

**Airport:** Fiumicino Km 35

Via Principe Amedeo, 3 - 00185 Roma - ITALY  
T +39 06 47741 F +39 06 4740413  
[metropole.rm@starhotels.it](mailto:metropole.rm@starhotels.it)  
[starhotels.com](http://starhotels.com)

# Metropole

ROMA

## Restaurant & Bar

In the elegant, intimate setting of the Apicio by Eataly restaurant, guests can enjoy the finest dishes from Rome's culinary tradition, as well as international recipes, accompanied by fine wines. The restaurant benefits from an exclusive partnership with Eataly.

At any time of day, the Bistrot Rendez-Vous by Eataly bar is the ideal venue for a coffee, a quick lunch or a cocktail.



# Metropole

ROMA



## 236 Rooms

- 105 Superior
- 49 Deluxe
- 54 Executive
- 21 Junior Suite
- 7 Suite

The 236 rooms and suites, entirely renovated in a classic and contemporary style and equipped with every comfort, are a peaceful oasis of calm and relaxation away from the hustle and bustle of the city.



# Metropole

ROMA



## Meetings & Events

**Meeting rooms: 9**

**Capacity (theatre style): 160 max**

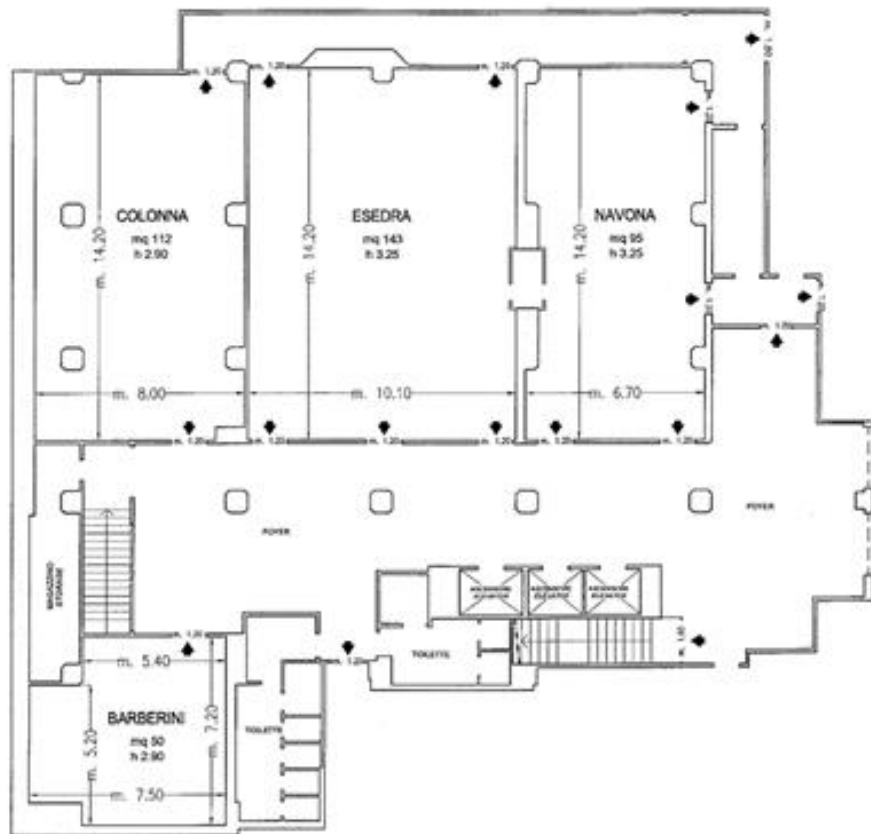
Our meeting rooms have recently been completely renovated.

The hotel has 9 meeting rooms that can host up to 160 people, all equipped with cutting-edge technology.

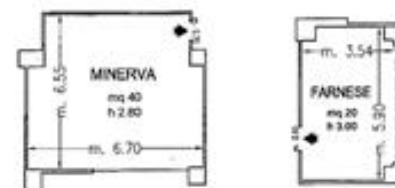


# Metropole

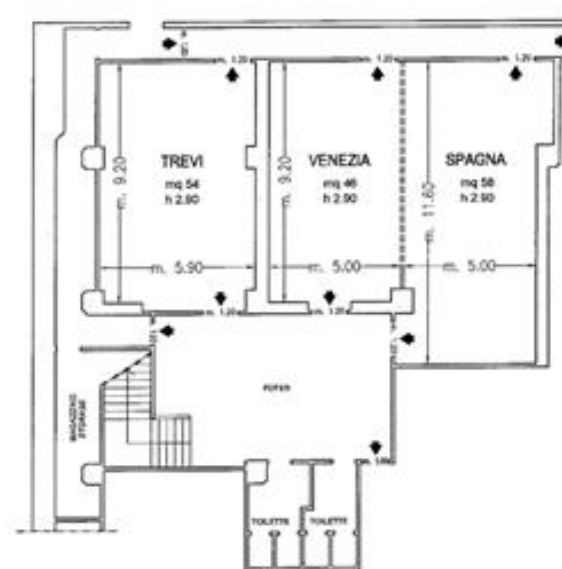
ROMA



Piano -1 / Basement



Piano Terra / Ground Floor



Piano -2 / Floor -2

- ◆ Uscite di sicurezza / Emergency Exits
- - - Finestre / Windows
- ▬▬▬▬▬ Pareti mobili / Modular Walls
- Colonne / Columns

# Metropole

ROMA

Meeting rooms	Area mq / ft.	L x W mt. / ft.	Height mt./ ft.	Theatre	Class room	Conference table/ U-shape	Cabaret style^	Cocktail reception	Banquet
Esedra	143 1536,68	14,20x10,10 46,59x33,14	3,25 10,66	160	84	50 - 40	72	120	-
Navona	95 1022,2	14,20x6,70 46,59x21,98	3,25 10,66	70	36	32 - 28	32	60	-
Colonna	112 1205,12	14,20x8,00 46,59x26,25	2,9 9,51	80	42	32 - 28	32	70	-
Barberini	50 538	5,20x5,40 17,06x17,72	2,9 9,51	40	24	25 - 18	-	-	-
Trevi	54 581,04	9,20x5,90 30,18x19,36	2,9 9,51	50	30	25 - 22	24	-	-
Venezia	46 494,96	9,20x5,00 30,18x16,40	2,9 9,51	40	30	25 - 20	-	-	-
Spagna	58 624,08	11,60x5,00 38,06x16,40	2,9 9,51	55	36	30 - 25	24	-	-
Venezia + Spagna	100 1076	9,20x10,00 30,18x32,81	2,9 9,51	90	42	38 - 32	40	-	-
Minerva	40 430,4	6,55x6,70 21,49x21,98	2,8 9,19	28	18	20 - 15	-	50	-
Farnese°	20 215,2	5,90x3,54 19,36x11,61	3 9,84	-	-	10	-	-	-
N° 10 Studio	15-20 161,46 - 215,28	-	3 9,84	-	-	12	-	-	-
Apicio by Eataly Restaurant	357 3841,32	17x13+13x13 58x42+42x42	2,80 9,19	-	-	-	-	350	200

° Daylight

^ Cabaret style: Size tables on request